



**REGIONAL SPECIALISED METEOROLOGICAL CENTRE-TROPICAL CYCLONES, NEW DELHI
SPECIAL TROPICAL WEATHER OUTLOOK**

DEMS-RSMC SPECIAL TROPICAL CYCLONES NEW DELHI DATED 18.06.2023

SPECIAL TROPICAL WEATHER OUTLOOK FOR NORTH INDIAN OCEAN (THE BAY OF BENGAL AND THE ARABIAN SEA) VALID FOR NEXT 120 HOURS ISSUED AT 0300 UTC OF 18.06.2023 BASED ON 0000 UTC OF 18.06.2023.

SUB: DEPRESSION (REMNANT OF CYCLONIC STORM 'BIPARJOY') OVER CENTRAL PARTS OF SOUTH RAJASTHAN & NEIGHBOURHOOD

THE DEPRESSION (REMNANT OF CYCLONIC STORM 'BIPARJOY') OVER CENTRAL PARTS OF SOUTH RAJASTHAN & NEIGHBOURHOOD MOVED EAST-NORTHEASTWARDS WITH A SPEED OF 10 KMPH DURING PAST 6-HOURS AND LAY CENTERED AT 0000UTC OF TODAY, THE 18TH JUNE, 2023 OVER THE SAME REGION NEAR LATITUDE 26.1°N AND LONGITUDE 73.3°E, ABOUT 40 KM EAST-SOUTHEAST OF JODHPUR (42339).

IT IS VERY LIKELY TO CONTINUE TO MOVE EAST-NORTHEASTWARDS AND MAINTAIN THE INTENSITY OF DEPRESSION TILL AROUND 1200 UTC OF 18TH JUNE.

AS PER INSAT 3D IMAGERY, ASSOCIATED SCATTERED TO BROKEN LOW/MEDIUM CLOUDS WITH EMBEDDED INTENSE TO VERY INTENSE CONVECTION LAY OVER SOUTH RAJASTHAN AND ADJOINING AREAS OF NORTH GUJARAT AREA. MINIMUM CLOUD TOP TEMPERATURE IS MINUS 90°C.

ASSOCIATED MAXIMUM SUSTAINED WIND SPEED (MSW) IS 25 KNOTS GUSTING TO 35 KNOTS. THE ESTIMATED CENTRAL PRESSURE IS 991 HPA. AT 0000 UTC, JHODPUR (42339) REPORTED MSLP OF 991.4 HPA, P24 OF -4.8 HPA AND MSW OF 360°/ 10KT.

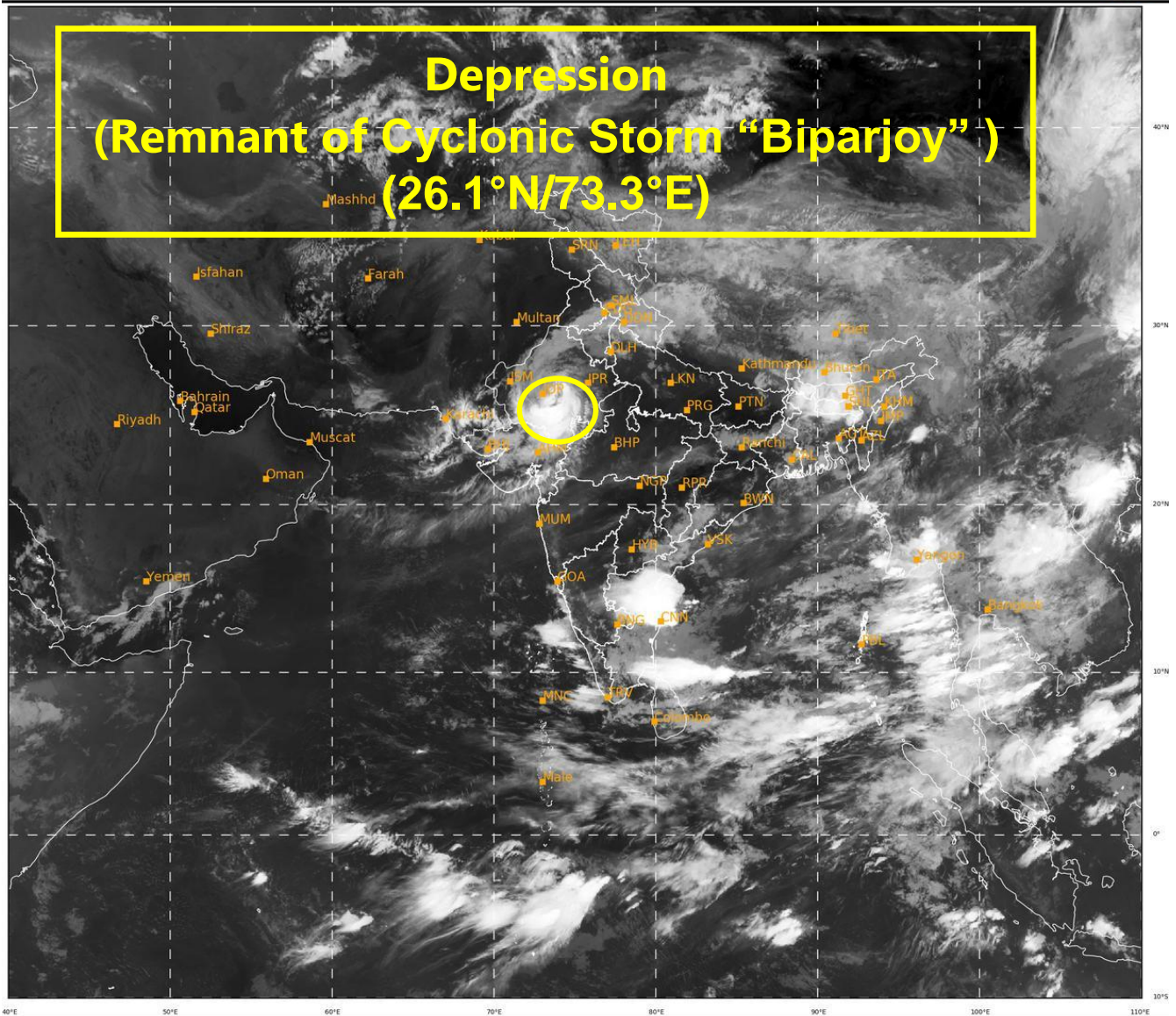
REMARKS:

THE LOW LEVEL VORTICITY IS AROUND $200-250 \times 10^{-6} \text{S}^{-1}$ & IS LOCATED AROUND THE SYSTEM CENTRE. LOW LEVEL CONVERGENCE IS ABOUT $10 \times 10^{-5} \text{S}^{-1}$ TO THE SOUTHWEST OF THE SYSTEM CENTRE AND UPPER LEVEL DIVERGENCE IS ABOUT $10 \times 10^{-5} \text{S}^{-1}$ TO THE SOUTHWEST OF THE SYSTEM CENTER. VERTICAL WIND SHEAR IS MODERATE (15-20 KNOTS) OVER THE SYSTEM AREA.

BASED ON ENVIRONMENTAL CONDITIONS AND NWP MULTI-MODEL FORECASTS UPDATES, THE SYSTEM IS VERY LIKELY TO MOVE NEARLY EAST-NORTHEASTWARDS AND MAINTAIN THE INTENSITY OF DEPRESSION TILL AROUND 1200 UTC OF 18TH JUNE.

**SHASHI KANT,
SCIENTIST C**

RSMC NEW DELHI



426

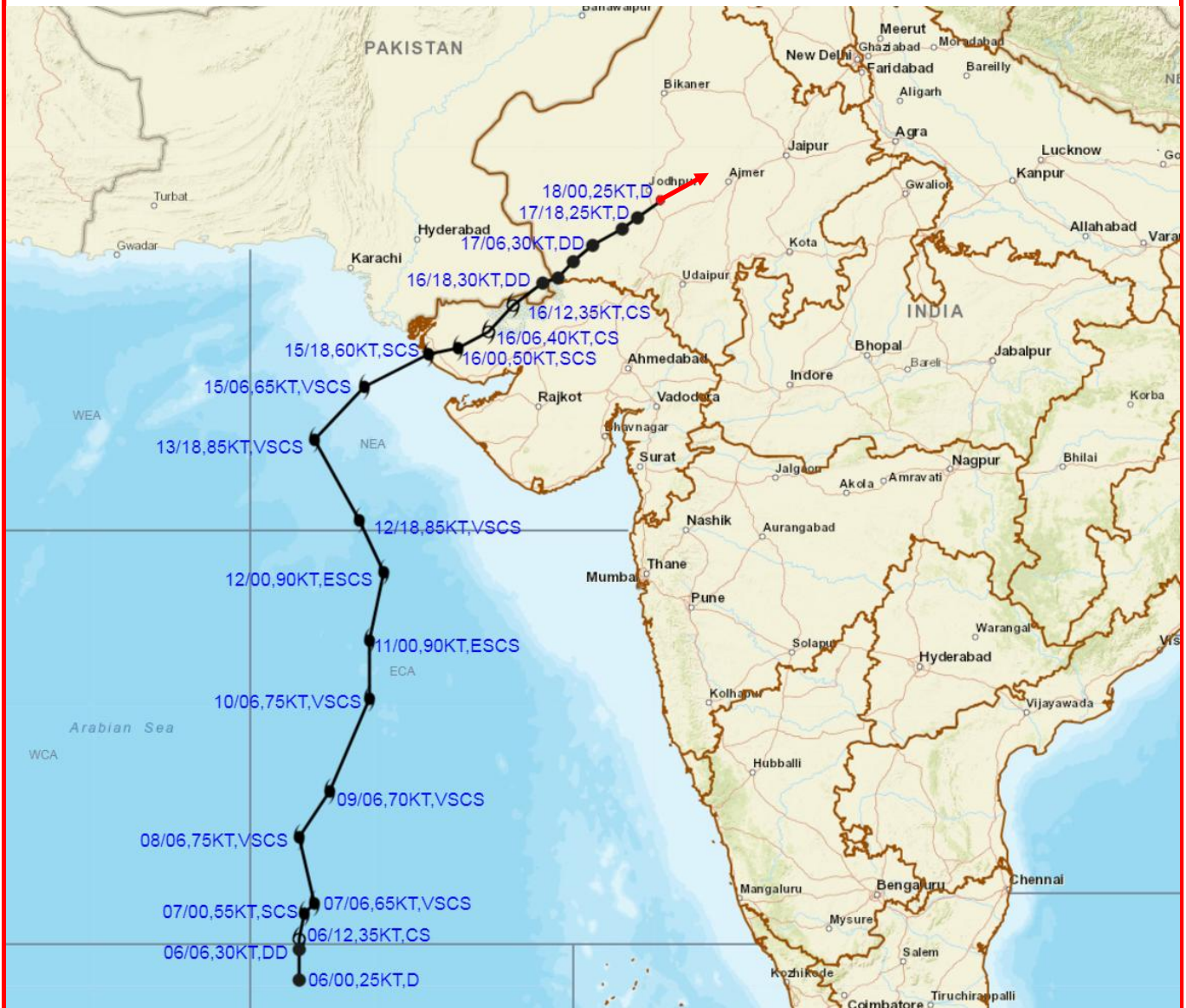
933

IMD, DELHI

Cloud distribution: (a) Isolated: <25%, Scattered:25-50%, Broken: 51-75%, Solid:>75%, Convection Intensity: (a) Weak: Cloud Top Temperature (CTT) >-25°C, (b) Moderate: CTT: - 25°C to -40°C, (c) Intense: CTT: - 41°C to -70°C and (d) Very Intense: : Less than -70°C
PROBABILITY OF CYCLOGENESIS (FORMATION OF DEPRESSION):NIL: 0%, LOW: 1-33%, , MODERATE: 34-66% AND HIGH: 67-100%
This is a guidance Bulletin for WMO/ESCAP Panel Member countries. Visit respective National websites for Country specific Bulletins



OBSERVED AND FORECAST TRACK OF DEPRESSION (REMANANT OF CYCLONIC STORM BIPARJOY) OVER CENTRAL PARTS OF SOUTH RAJASTHAN AND NEIGHBOURHOOD BASED ON 0000 UTC (0530 IST) OF 18TH JUNE 2023.



DATE/TIME IN UTC
 IST=UTC + 0530
 L: LOW PRESSURE AREA
 WML: WELL MARKED LOW PRESSURE AREA
 D: DEPRESSION (17-27 KT)
 DD: DEEP DEPRESSION (28-33 KT)
 CS: CYCLONIC STORM (34-47 KT)
 SCS: SEVERE CYCLONIC STORM (48-63KT)
 VSCS: VERY SEVERE CYCLONIC STORM (64-89 KT)
 ESCS: EXTREMELY SEVERE CYCLONIC STORM (90-119 KT)
 SuCS: SUPER CYCLONIC STORM (≥ 120 KT)

- LESS THAN 34 KT
- 34-47 KT
- ≥ 48 KT
- OBSERVED TRACK
- FORECAST TRACK
- CONE OF UNCERTAINTY

Cloud distribution: (a) Isolated: <25%, Scattered:25-50%, Broken: 51-75%, Solid:>75%, Convection Intensity: (a) Weak: Cloud Top Temperature (CTT) >-25°C, (b) Moderate: CTT: - 25°C to -40°C, (c) Intense: CTT: - 41°C to -70°C and (d) Very Intense: : Less than -70°C
 PROBABILITY OF CYCLOGENESIS (FORMATION OF DEPRESSION):NIL: 0%, LOW: 1-33%, , MODERATE: 34-66% AND HIGH: 67-100%
 This is a guidance Bulletin for WMO/ESCAP Panel Member countries. Visit respective National websites for Country specific Bulletins